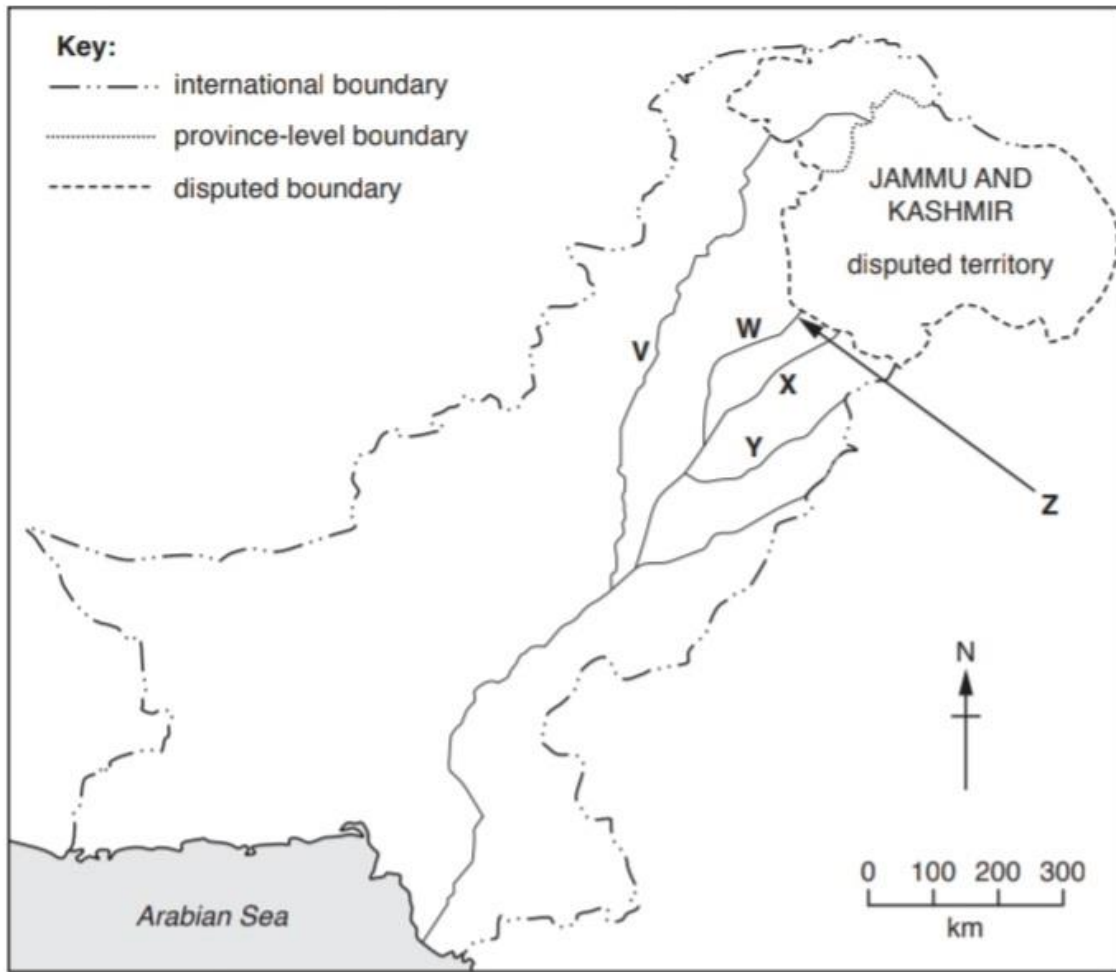




1. A)

i. Name rivers V, W, X and Y.



V \_\_\_\_\_

W \_\_\_\_\_

X \_\_\_\_\_

Y \_\_\_\_\_

[4]

ii. Name dam Z shown on Fig. 2.1. Z

\_\_\_\_\_ [1]

Name two examples of small dams.

1. \_\_\_\_\_

2. \_\_\_\_\_

[2]

iii. State the differences between large and small dams.

---

---

---

[3]

iv. Suggest four problems caused by siltation.

---

---

---

---

[4]

**B)**

Identify the following method of irrigation.

[1]



---

---

---

---

[4]

**C)**

- i. Name two barrages and the rivers where they are present.

---

---

[2]

- ii. differentiate between the following.

Inundation canal and perennial canal

---

---

[2]

Barrages and weirs

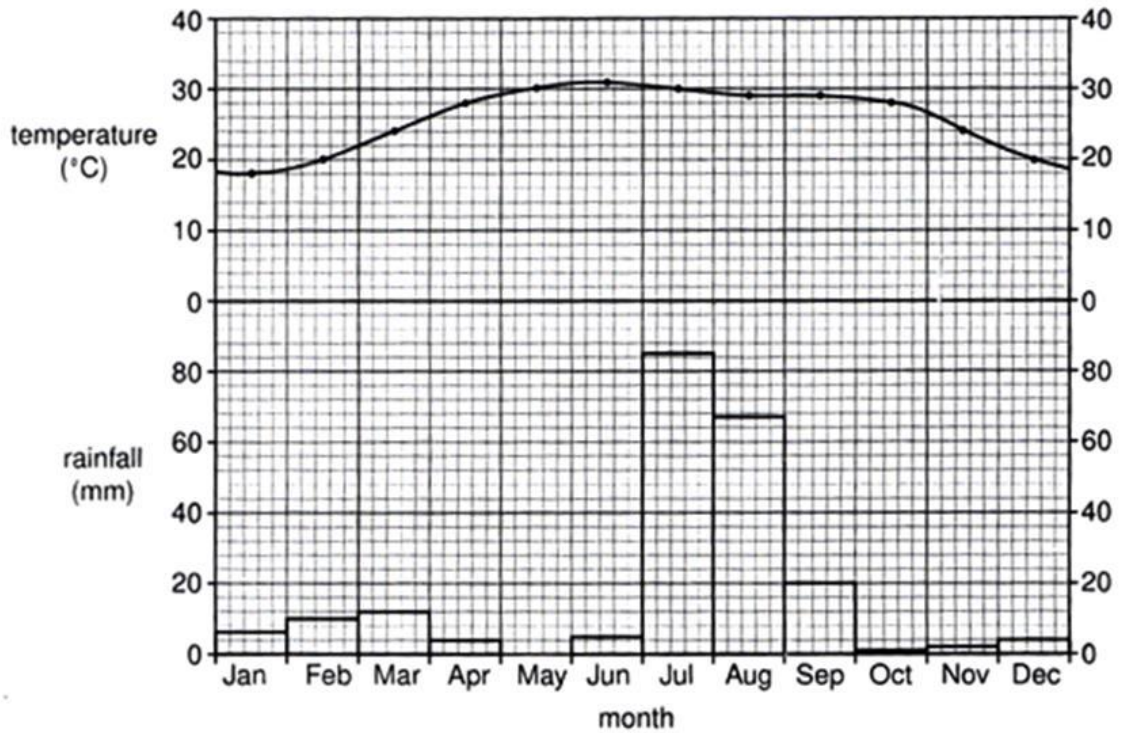
---

---

[2]

**[Total: 25]**

2. A) Study Fig which shows the climate of Karachi.



i. By how much does the temperature rise from January to May?

\_\_\_\_\_ [1]

ii. Describe the pattern of rainfall during the winter season from October to March.

\_\_\_\_\_  
 \_\_\_\_\_ [2]

iii. With reference to Fig. only, describe the climate of the months from June to September.

\_\_\_\_\_  
 \_\_\_\_\_  
 \_\_\_\_\_  
 \_\_\_\_\_ [4]

**B)**

i. Explain the causes of the monsoon at Karachi.

---

---

---

---

[4]

ii. Name the violent storms that form over the sea and that may affect Karachi.

---

[1]

iii. In which months may these occur?

---

[1]

C)

i. Explain all the factors effecting the temperature of Pakistan.

---

---

---

---

[4]

ii. Explain the term Maritime influence with the help of an example

---

---

[2]

iii. Mention any two sources of rain fall in Pakistan other than monsoon.

---

---

[2]

iv. Explain the reason of any one source of rainfall mentioned in part c (iii)

---

---

---

---

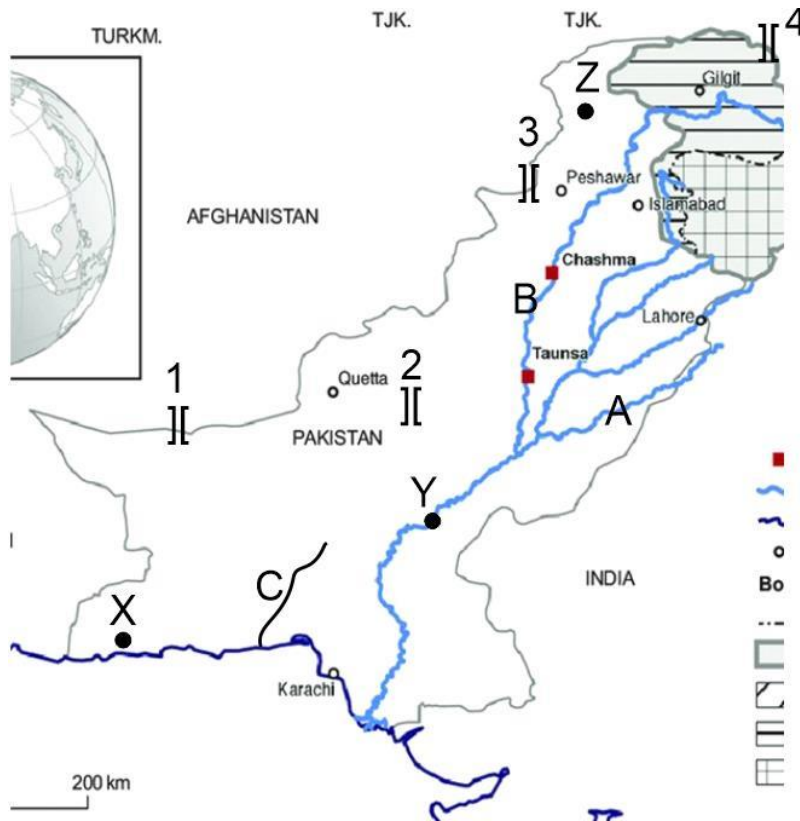
[4]

**[Total: 25]**

3. A)

i. Label the following features on the map.

[3]



River A, B and C

A \_\_\_\_\_ B \_\_\_\_\_ C \_\_\_\_\_

Barrage y \_\_\_\_\_

ii. Explain the importance of dams in Pakistan

---



---



---

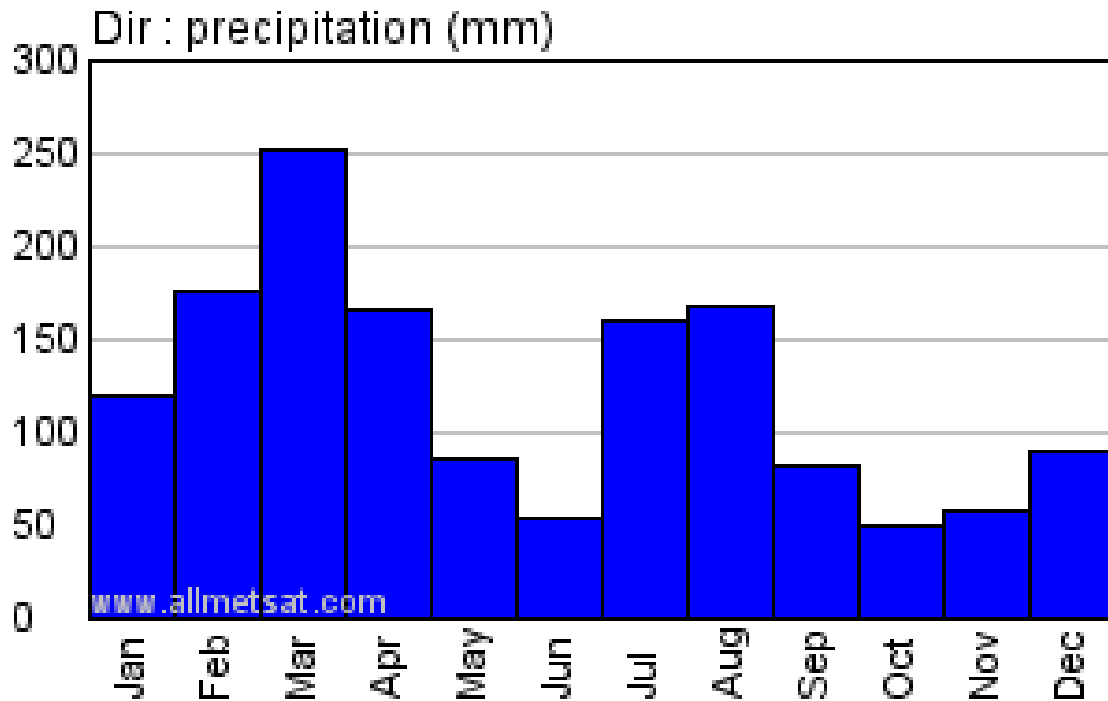


---

[3]



**B) Study Fig. a graph showing rainfall in Dir, Khyber Pakhtunkhwa.**



i. What is the maximum rainfall, and when does it occur?

---

---

[2]

ii. For how many months between October and June is the rainfall above 100 mm?

---

[1]

iii. Give two causes of high rainfall between October and June at Dir.

---

---

[2]

iv. What is the main cause of summer rainfall at Dir?

---

[1]

C)

- i. On the outline map of Pakistan mark and shade two areas which experience high annual rainfall (above 500mm).



- ii. Mention any two reasons of high rainfall in these areas.

---

---

[2]

- iii. Explain the difficulties for people living in areas of high rainfall.

---

---

---

[3]

**D)**

i. explain the causes of flood in Pakistan

---

---

---

---

[4]

ii. How can we control flood?

---

---

---

---

[4]

**[Total: 25]**